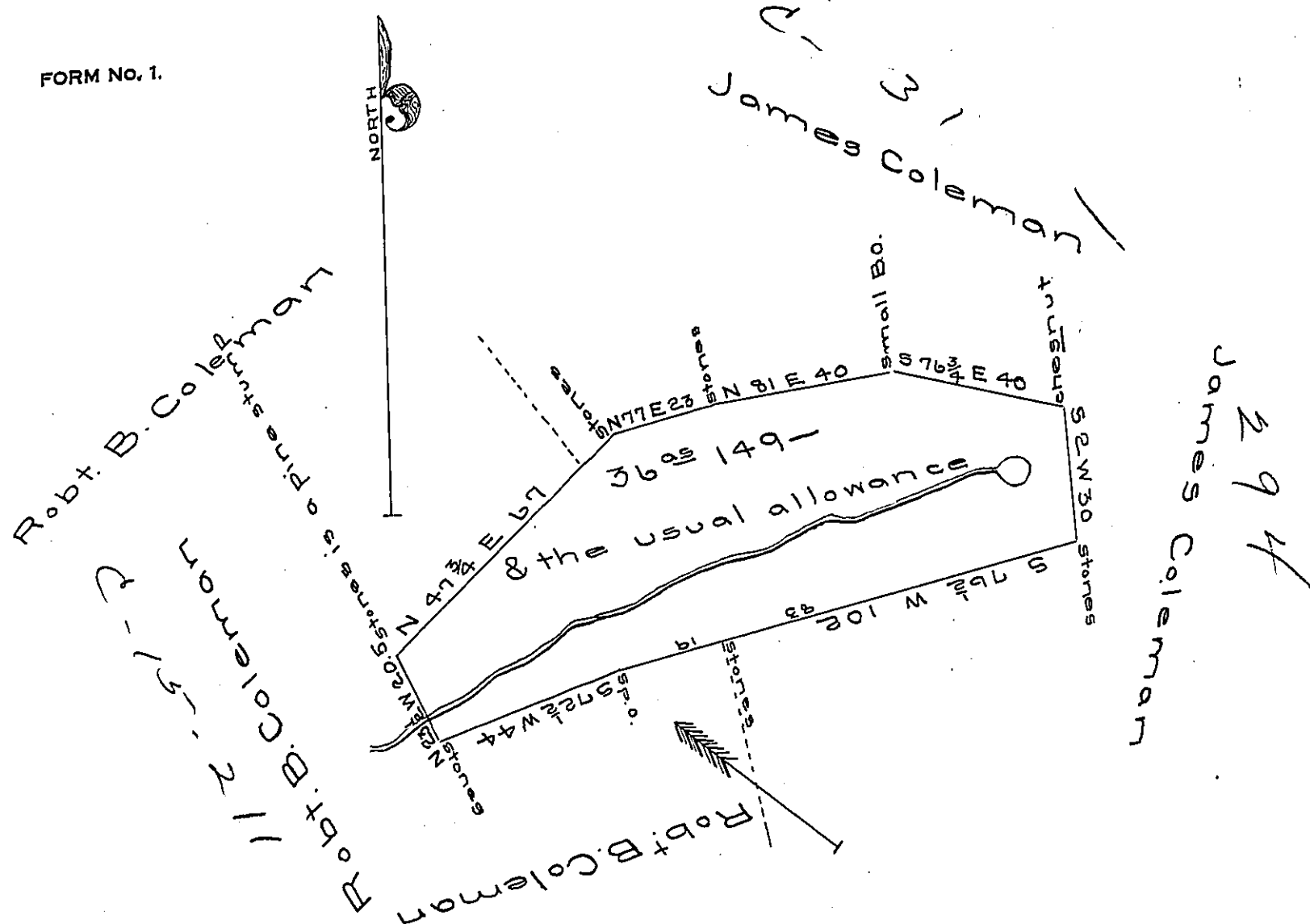


FORM No. 1.



A draught of a tract of land situate in Elizabeth township in the County of Lancaster containing thirty six acres and one hundred and forty nine perches & the usual allowance of six per cent for roads &c. Surveyed December 5th A.D. 1843 in pursuance of a warrant dated the 17th day of December A.D. 1755 granted to John Wolfgang Schmeltzer, and now claimed by Peter Elser.

pr. Jacob Redsecker D.S.

To Jacob Sallade Esq. }
Surveyor General

IN TESTIMONY that the above is a copy of the original remaining on file in the Department of Internal Affairs of Pennsylvania, made conformably to an Act of Assembly approved the 16th day of February 1833, I have hereunto set my hand and caused the Seal of said Department to be affixed at Harrisburg, this second day of April 1907.

Jacob R. Brown
Secretary of Internal Affairs.